



# CHELSEA III

COMPLETE SOPHISTICATION.

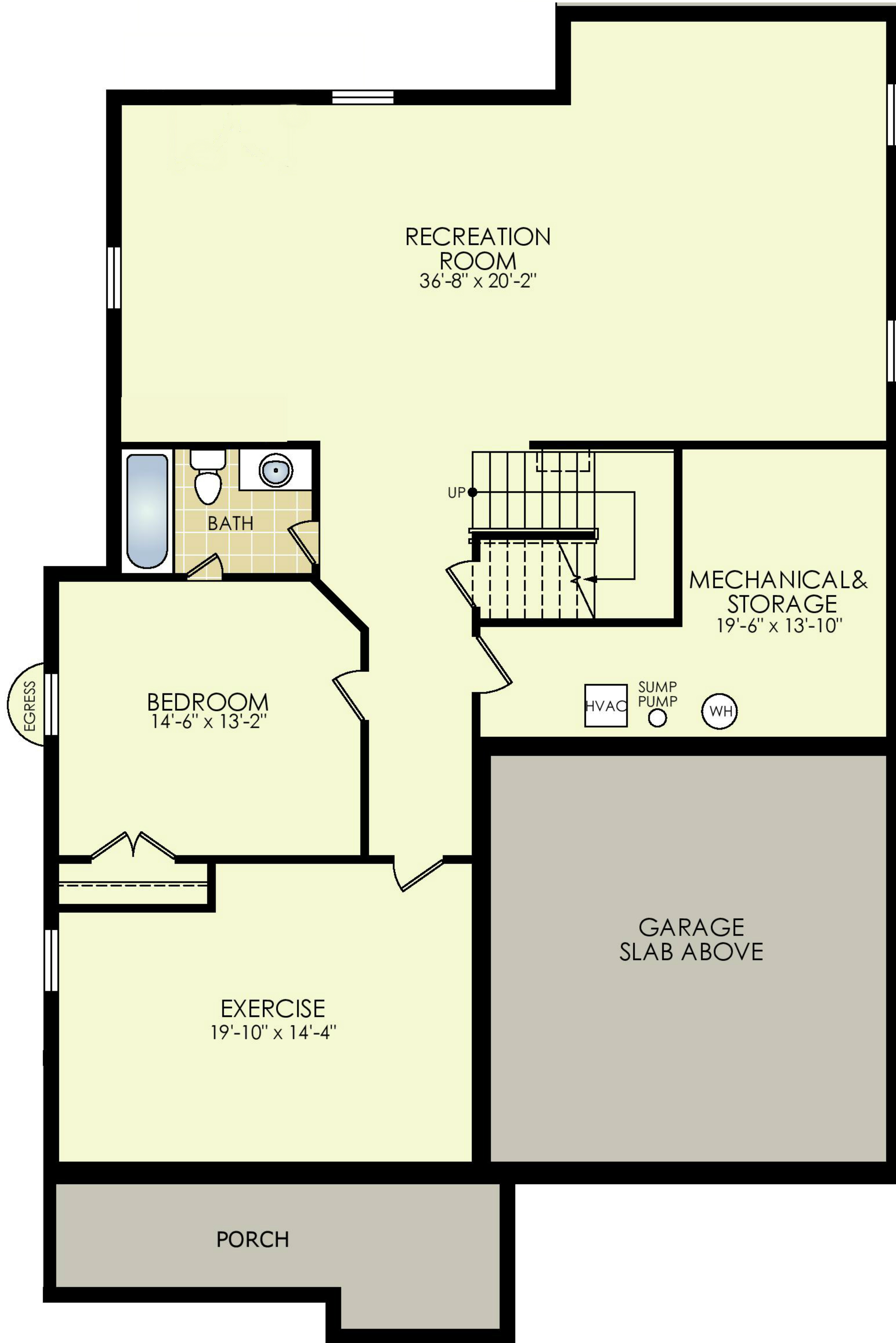
SPRAWLING ENTERTAINING SPACES

COMBINED WITH MASTERFUL DESIGN AND ELEGANCE.





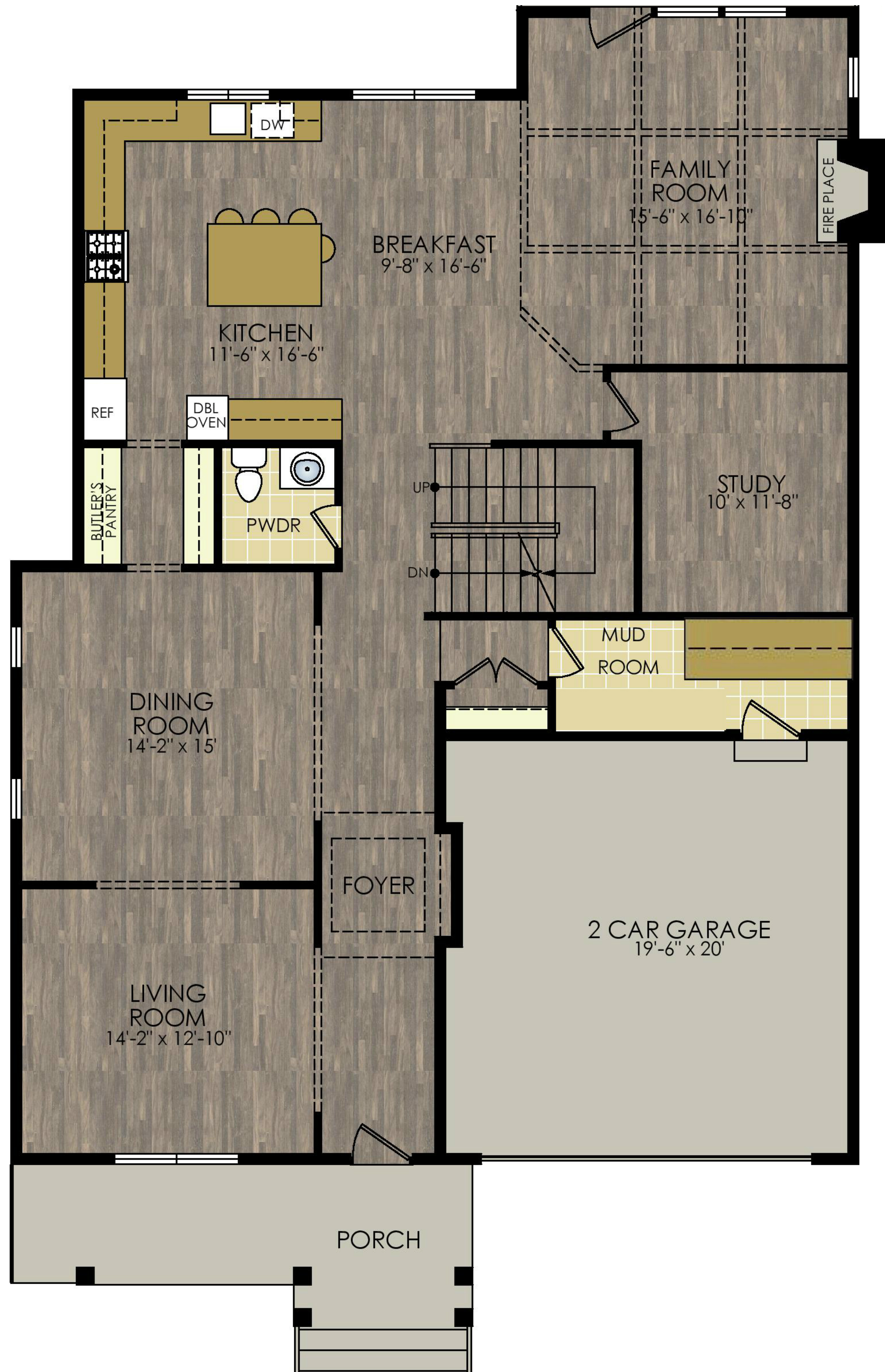
# CHELSEA III



**LOWER LEVEL**



# CHELSEA III



**MAIN LEVEL**

**2109 SF TOTAL**  
**1709 SF LIVING SPACE**  
**400 SF GARAGE**





# CHELSEA III



UPPER LEVEL



Although illustrations and specifications are believed to be correct at time of publication, accuracy cannot be guaranteed. The right is reserved to make changes, without notice or obligation. Windows, doors and room sizes may vary on the options and elevations selected. Optional items indicated are available at additional cost unless otherwise indicated in writing. This brochure is not part of any legal contract and is for marketing purposes only. © Copyright 2018 Tilden Partners, LLC. All Rights Reserved.



# Site Plan



# 9109

## Friars Road

© Copyright 2019 Haverford Homes. All Rights Reserved.  
Architectural depictions and floor plans are artist's concepts for illustrative purposes only and may include various features and options not part of the base plan.  
All dimensions are considered to be approximate. Elevation, floor plan, and prices are subject to change without notice.

HVERFORD HOMES  
6110 EXECUTIVE BLVD., SUITE 310, ROCKVILLE, MD 20852 301-864-6500

